



BOARD MINUTES

Special Telecommunications Meeting of the Adelaide Park Lands Authority

Thursday 18 June 2020

A subsidiary of



Membership: The Lord Mayor; and
4 other members appointed by the Council; and
5 members appointed by the Minister.

Present:

Presiding Member The Right Honourable the Lord Mayor Sandy Verschoor
Deputy Presiding Member Ms Kirsteen Mackay
Board Members Ms Allison Bretones
 Mr Rob Brookman AM
 Ms Jessica Davies-Huynh
 Mr Stephen Forbes
 Councillor Alexander Hyde (Deputy Lord Mayor)
 Ms Stephanie Johnston
 Mr Craig Wilkins
 Mr Ben Willsmore

Acknowledgement of Country

With the opening of the Board Meeting, the Presiding Member, Lord Mayor Sandy Verschoor stated:

‘Adelaide Park Lands Authority acknowledges that we are meeting on traditional Country of the Kurna people of the Adelaide Plains and pays respect to Elders past and present. We recognise and respect their cultural heritage, beliefs and relationship with the land. We acknowledge that they are of continuing importance to the Kurna people living today.

And we also extend that respect to other Aboriginal Language Groups and other First Nations who are present today.’

Apologies

Nil

Report for the consideration of the Board

1. Item 3.1 – Brown Hill and Keswick Creeks Stormwater Management Project (South Park Lands) [2018/02437] [APLA]

Mr Ben Willsmore disclosed a possible perceived conflict of interest in Item 3.1 - Brown Hill and Keswick Creeks Stormwater Management Project (South Park Lands), pursuant to Section 4.7 of the *Adelaide Park Lands Authority Charter* and Section 75A of the *Local Government Act 1999 (SA)*, as he is employed by the City of Unley who are a financial contributor to the Brown Hill and Keswick Creek Stormwater Board, a fact that would not compromise impartiality/objectivity at this Board meeting and therefore would remain in the Telecommunications Board meeting and participate in debate and the vote.

At the request of the Presiding Member, Lord Mayor Sandy Verschoor, Klinton Devenish, Director Place (CoA) (CoA), addressed the meeting to provide a precis of the matter before the Board.

The following members of the Brown Hill and Keswick Creeks Stormwater Board's project management and design team provided a brief presentation on the project and responded to questions from Board members.

- Peta Mantzarapis, BHKC Project Director
- Angelo Lanzilli, Director of ProcurePM and BHKC Project Manager, South Park Lands
- Olivia Oliver, Technical Manager, Tonkin
- Robin Allison, Director of Design Flo

During the presentation Mr Stephen Forbes joined the Telecommunications meeting at 5.49 pm.

Discussion ensued during which Councillor Alexander Hyde (Deputy Lord Mayor) left the meeting at 6.20 pm, returned at 6.23 pm, left at 6.23 pm, returned at 6.24 pm, left at 6.27 pm and returned to the meeting at 6.28 pm.

It was then -

Moved by Mr Craig Wilkins,
Seconded by Mr Rob Brookman -

THAT THE ADELAIDE PARK LANDS AUTHORITY ADVISES COUNCIL:

That the Adelaide Park Lands Authority:

1. Notes the Brown Hill and Keswick Creeks Stormwater Board's stakeholder engagement report on the design proposal for stormwater management works proposed for Victoria Park / Pakapakanthi (Park 16) and Blue Gum Park / Kurangga (Park 20) as provided in Attachment A to Item 3.1 on the Agenda for the Special meeting of the Board of the Adelaide Park Lands Authority held on 18 June 2020.
2. Supports the general intent of the design proposal for the stormwater management works in Victoria Park / Pakapakanthi (Park 16) as shown in Attachment B to Item 3.1 on the Agenda for the Special meeting of the Board of the Adelaide Park Lands Authority held on 18 June 2020.
3. Supports the removal of two regulated trees, 31 unregulated or exempt trees and a grove of White Poplar trees in Victoria Park / Pakapakanthi (Park 16), as shown in Attachment D to Item 3.1 on the Agenda for the Special meeting of the Board of the Adelaide Park Lands Authority held on 18 June 2020
4. Recommends the project team re-look at the design proposal for Blue Gum Park / Kurangga (Park 20), as shown in Attachment E (noting that tree 96 is no longer proposed for removal and tree 108 was incorrectly classified as significant) to Item 3.1 on the Agenda for the Special meeting of the Board of the Adelaide Park Lands Authority held on 18 June 2020, with the aim of reducing the impact on established trees, in particular two regulated trees – trees (19) and (95) by shifting the works northwards as part of a possible modification of the existing Tree Climb infrastructure.
5. Commends the design team for reconfiguring the design to ensure the retention of tree (96).
6. Notes the proposed planting of over 120 new trees in Victoria Park / Pakapakanthi (Park 16) and 40 in Blue Gum Park / Kurangga (Park 20) as part of the project.
7. Supports the use of part of Victoria Park / Pakapakanthi (Park 16) as generally shown in Attachment F to Item 3.1 on the Agenda for the Special meeting of the Board of the Adelaide Park Lands Authority held on 18 June 2020 as a temporary soil stockpile and soil sorting facility for the duration of the works.
8. Notes that the location and shape of the proposed temporary soil stockpile and soil sorting facility, as generally shown in Attachment F to Item 3.1 on the Agenda for the Special meeting of the Board of the Adelaide Park Lands Authority held on 18 June 2020, is indicative and subject to finalisation pending discussions with organisers of events such as the Superloop Adelaide 500.
9. Recommends that the Brown Hill and Keswick Creeks Stormwater project team works with Kurna community representatives to ensure that Kurna cultural heritage for the Victoria Park / Pakapakanthi (Park 16) and Blue Gum Park/Kurangga (Park 20) site is clearly recognised and incorporated in the native vegetation, interpretative signage and any artworks associated with the project.

During Discussion:

- Councillor Alexander Hyde (Deputy Lord Mayor) left the meeting at 6.37 pm and returned at 6.39 pm.
- with the consent of the mover, seconder and the Board, Part 4 of the motion was varied to remove the word 'northwards'
- The Presiding Member, Lord Mayor Sandy Verschoor acknowledged the value of the site visit for Board members and thanked the Brown Hill and Keswick Creeks Stormwater Board's project management and design team for their participation in the site visit along with the presentation on the project provided to the Board.
- the Board noted that Klinton Devenish, Director Place (CoA) undertook to discuss with TreeClimb - Adelaide the possible modification of the existing Tree Climb infrastructure having regard to the Brown Hill and Keswick Creeks Stormwater Management Project design proposal for Blue Gum Park / Kurangga (Park 20).

The motion, as varied, was then put and carried

The PowerPoint presentation utilised is attached for information at the conclusion of the Minutes of this meeting

Closure

The Special meeting of the Board closed at 6.44 pm

Lord Mayor, Sandy Verschoor
Presiding Member
Adelaide Park Lands Authority

Document Attached for Reference

Minute 1 [Item 3.1 – Brown Hill and Keswick Creeks Stormwater Management Project (South Park Lands) – PowerPoint Presentation]

Current situation


- Over 2,000 properties impacted by flooding
- Community impact in excess of \$250m



Stormwater Management Plan

- Collaboration between Cities of Adelaide, Burnside, Mitcham, Unley and West Torrens
- Establishment of the Brown Hill and Keswick Creeks Stormwater Board




Flood mitigation works of the SMP

Adelaide Park Lands Authority - Special Board Meeting - Minutes - 18 June 2020

Licensed by Copyright Agency. You must not copy this without permission.



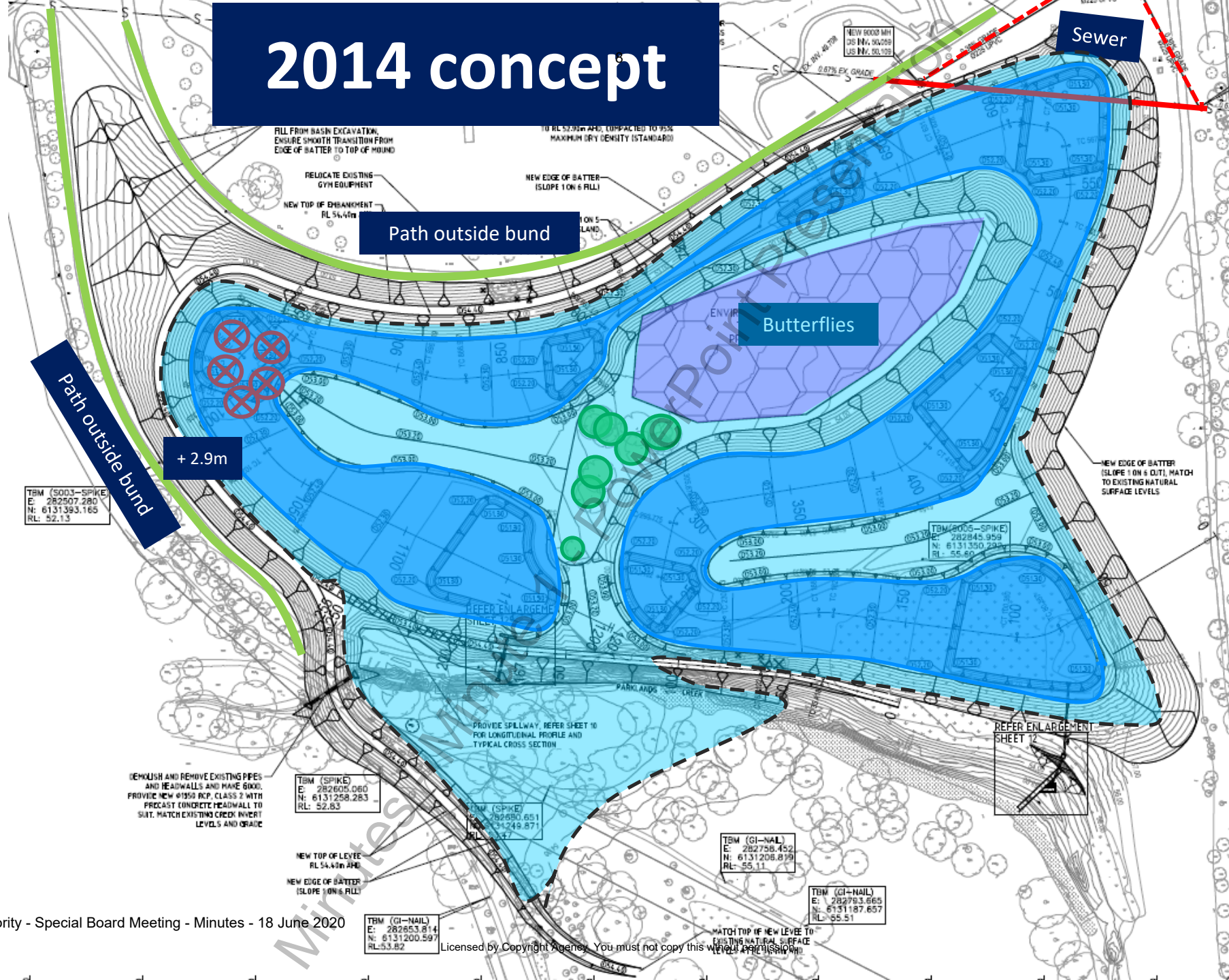
Implementation of the SMP

- Objectives
 - Protection from flooding
 - Improved quality of stormwater discharge
 - Beneficial reuse of stormwater
 - Creek rehabilitation; protection and enhancement of biodiversity
 - Improved recreational amenity in open space areas traversed by watercourses
- The order of works
 - Detention
 - Capacity upgrades
 - Downstream to upstream

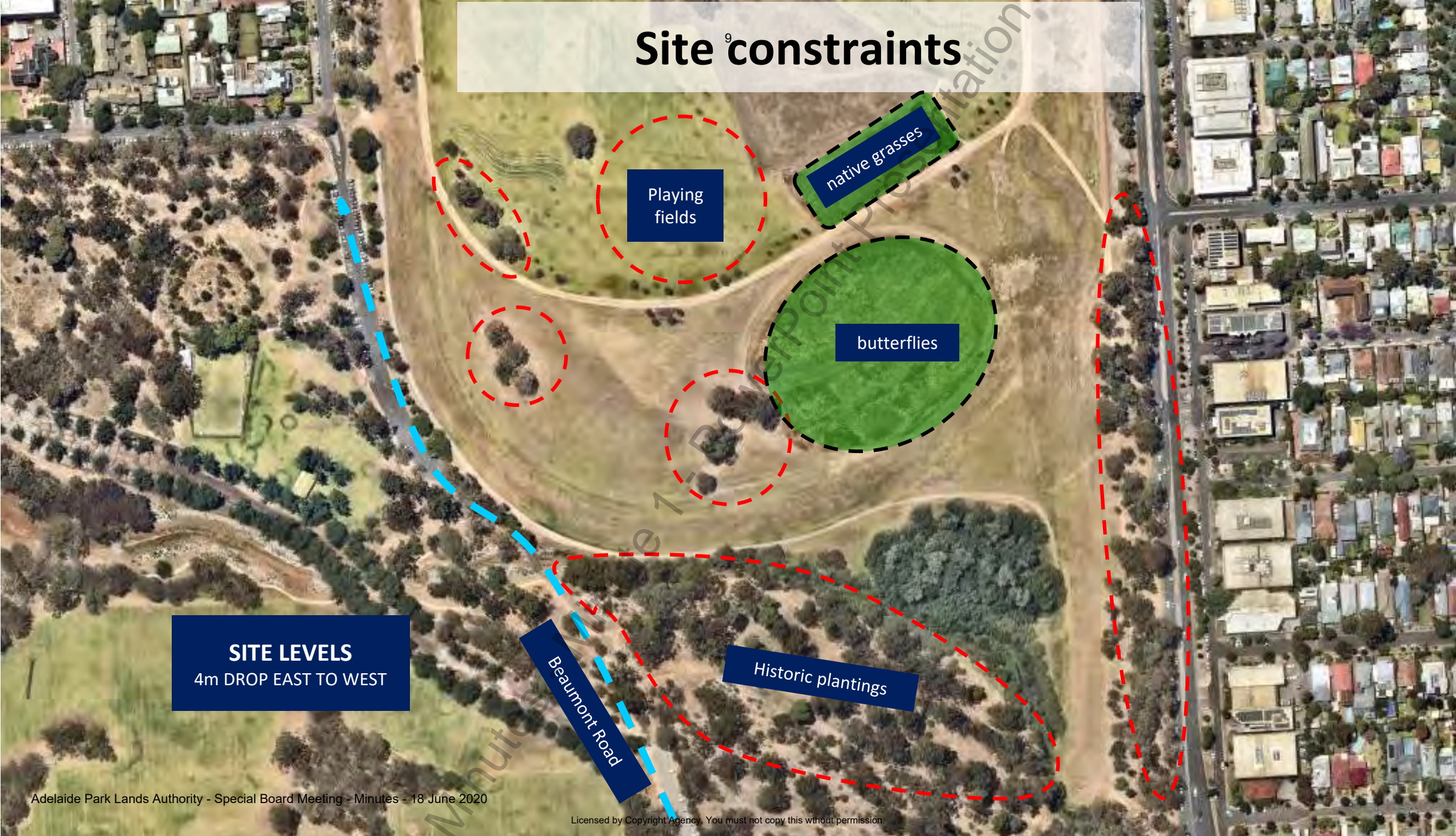
South Park Lands Project

- Regional flood mitigation
- 3 key components
 - Enlargement of basin on Glenside site
 - 3 hectare wetland in Victoria Park/ Pakapakanthi (Park 16)
 - Creek works and additional storage capacity in Blue Gum Park/ Kurangga (Park 20)
- Design development
- Features of the design

2014 concept



Site ⁹ constraints



SITE LEVELS
4m DROP EAST TO WEST

Playing fields

native grasses

butterflies

Beaumont Road

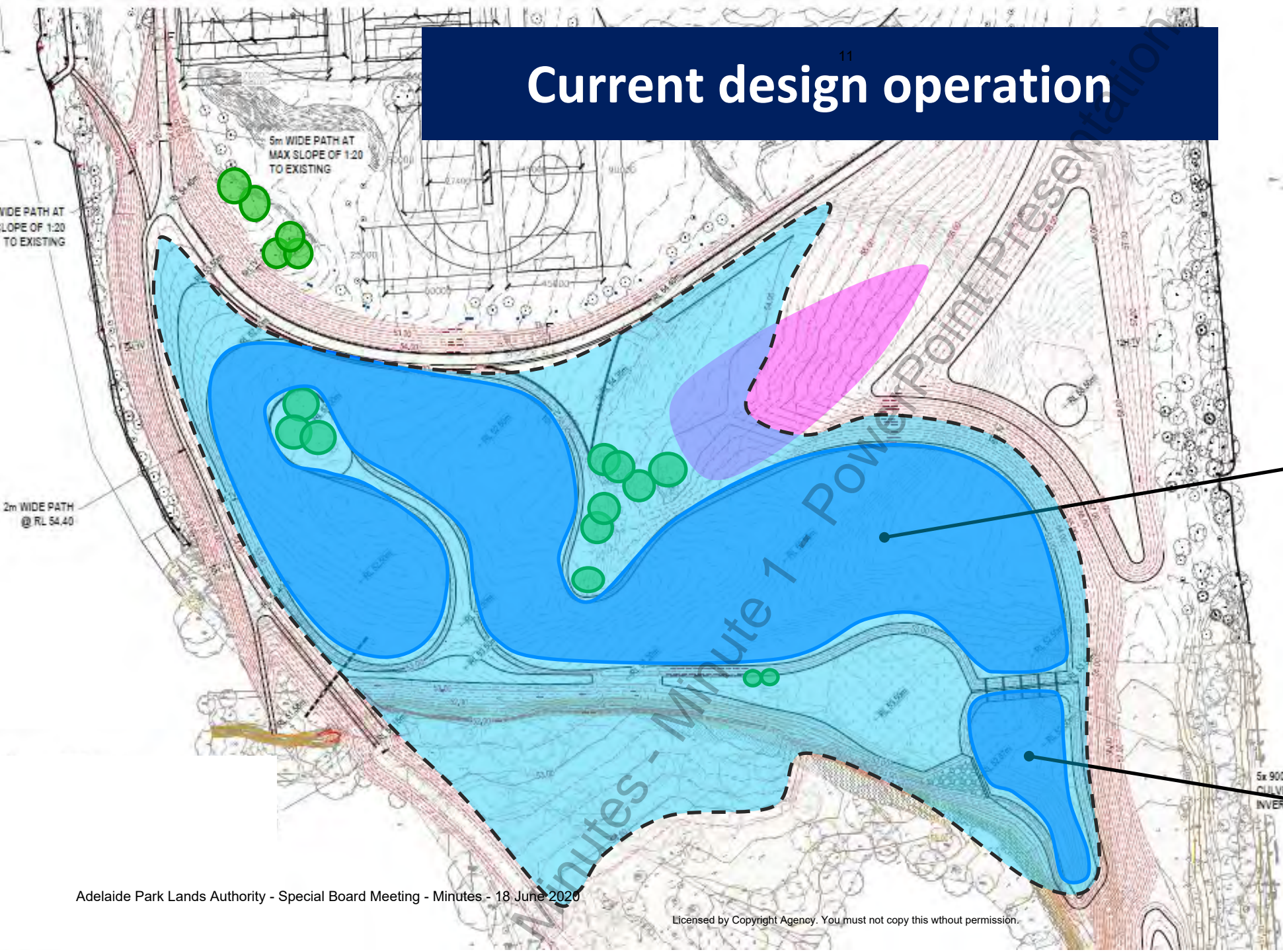
Historic plantings



Wetland design development:

1. Avoid butterfly conservation area
2. Minimise tree loss
3. Maintain flood storage
4. **Maintain wetland treatment & habitat**

Current design operation



Landscape features



- Path network (1,800 m)
- Viewing areas - mounds
- Boardwalks (3) Stone x-ing
- Amphitheatre – north & south
- Enhanced running track (longer)
- New plantings

Adelaide Park Lands Authority - Special Board Meeting - Minutes - 18 June 2020

Licensed by Copyright Agency. You must not copy this without permission.



View from amphitheatre¹⁴





Path networks
Stepping stones
Boardwalks
Viewing areas
Shelters
Resting areas
Habitat

Arborman tree assessment¹⁶

Assessment for trees >5m

Retention ratings (structure, height, habitat, amenity)

- 1. Important** – must have compelling reason for removal
- 2. High** - must have compelling reason for removal
- 3. Moderate** - desirable to keep if not affecting functionality
- 4. Low** – Can be replaced

Park 16 Tree summary

PARK 16 TREES	Location	Retention rating	Number
Regulated trees (2)	Wetland	Important	1
	Creek north bank	High	1
Unregulated trees (12)	Fitness	Low	4
	Creek north bank	Low	1
		Moderate	5
	Embankment	Low	1
		Moderate	1
Trees < 5m height (19)	Fitness	Not assessed	1
	Maintenance track	Not assessed	2
	Creek	Not assessed	1
	Creek north bank	Not assessed	4
	Embankment	Not assessed	11
Total			33
Poplar Grove	Poplar grove		Approx 60



Legend

- Pathways
- Mounding & landscape
- Existing creek line
- Wetland
- New retaining wall
- New tree
- Tree to be removed

Wetland - 1

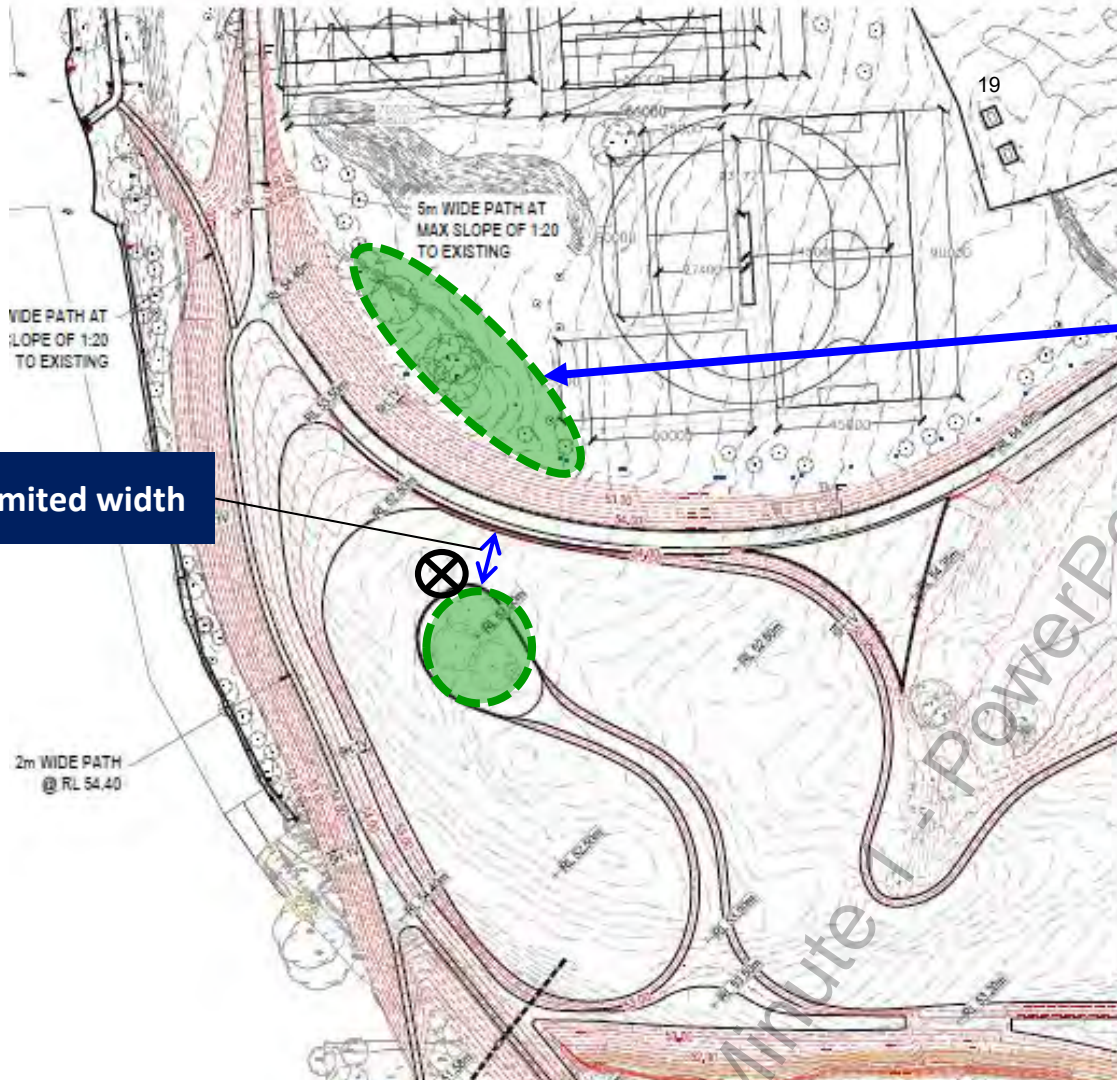
Fitness - 5

Creek, north bank - 11

Embankment - 13

Creek - 1

Maintenance track - 2



Limited width



- Protect tree grove to north
- Retain remainder of cluster to south
- How?
 - Vertical batters (gabion)
 - Flow path width
 - Keep flow velocities low to avoid scour

South Park Lands Project – Park 20

- Complements flow reduction from Park 16 works
- Throttle flows from CBD and Park Lands Creek
- Create 50,000 m³ of temporary, shallow flood storage (CLMP)

Design development

- Protect significant trees along Park Lands Creek
- Minimise tree removals
- Minimise impacts on existing users (sporting clubs, Tree Climb, park users)
- Safety



South Park Lands Blue Gum Park / Kurangga (Park 20)



Features

1. Low level mound (<1m)
2. Realign Park Lands Creek
3. Channels converge
4. New section of creek
5. Stabilise existing creek line

Adelaide Park Lands Authority - Special Board Meeting - Minutes - 18 June 2020

Site constraints

23

Sports fields

Tree Climb Infrastructure

BMX track

BMX track

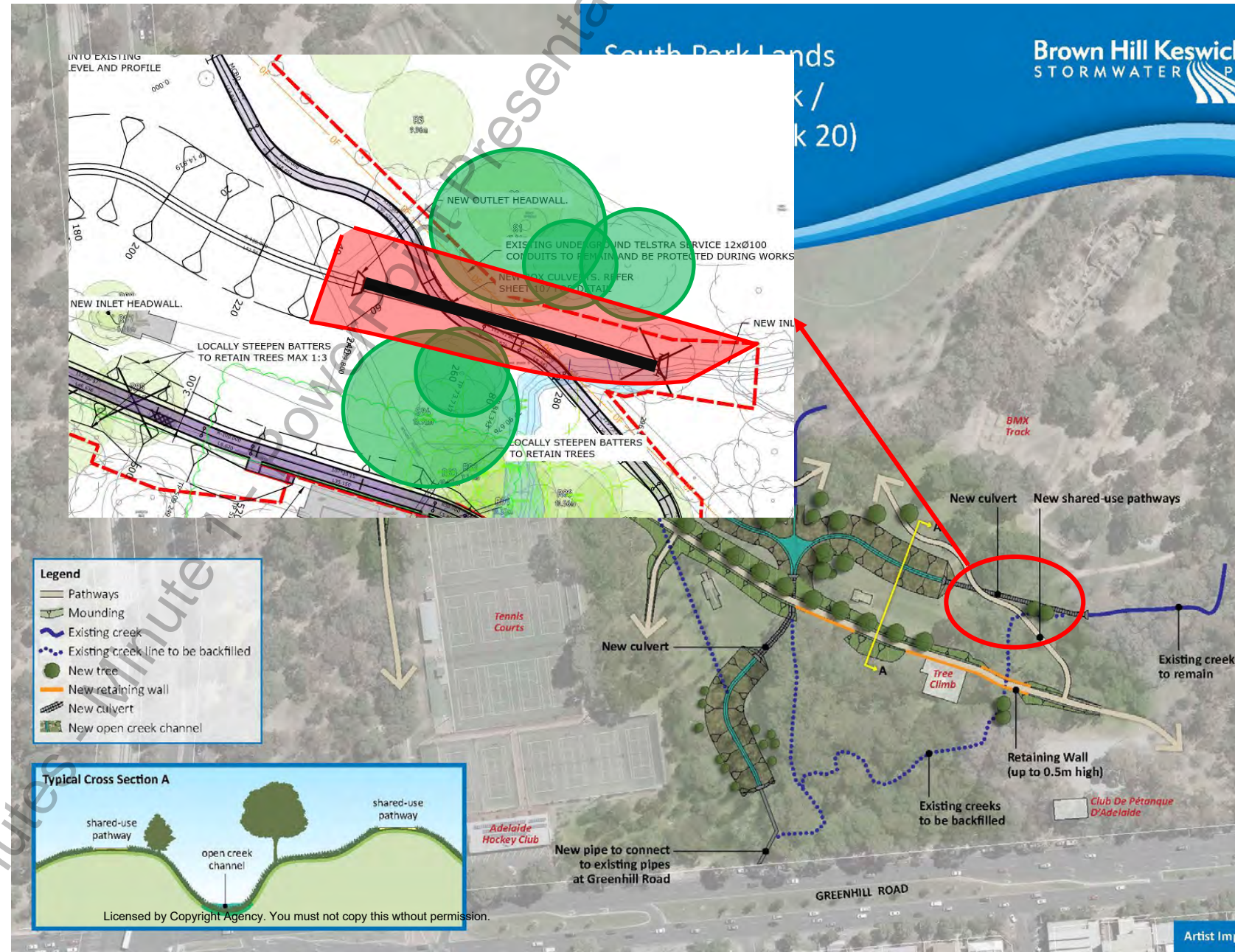
Sports complex

Significant trees and biodiversity revegetation site

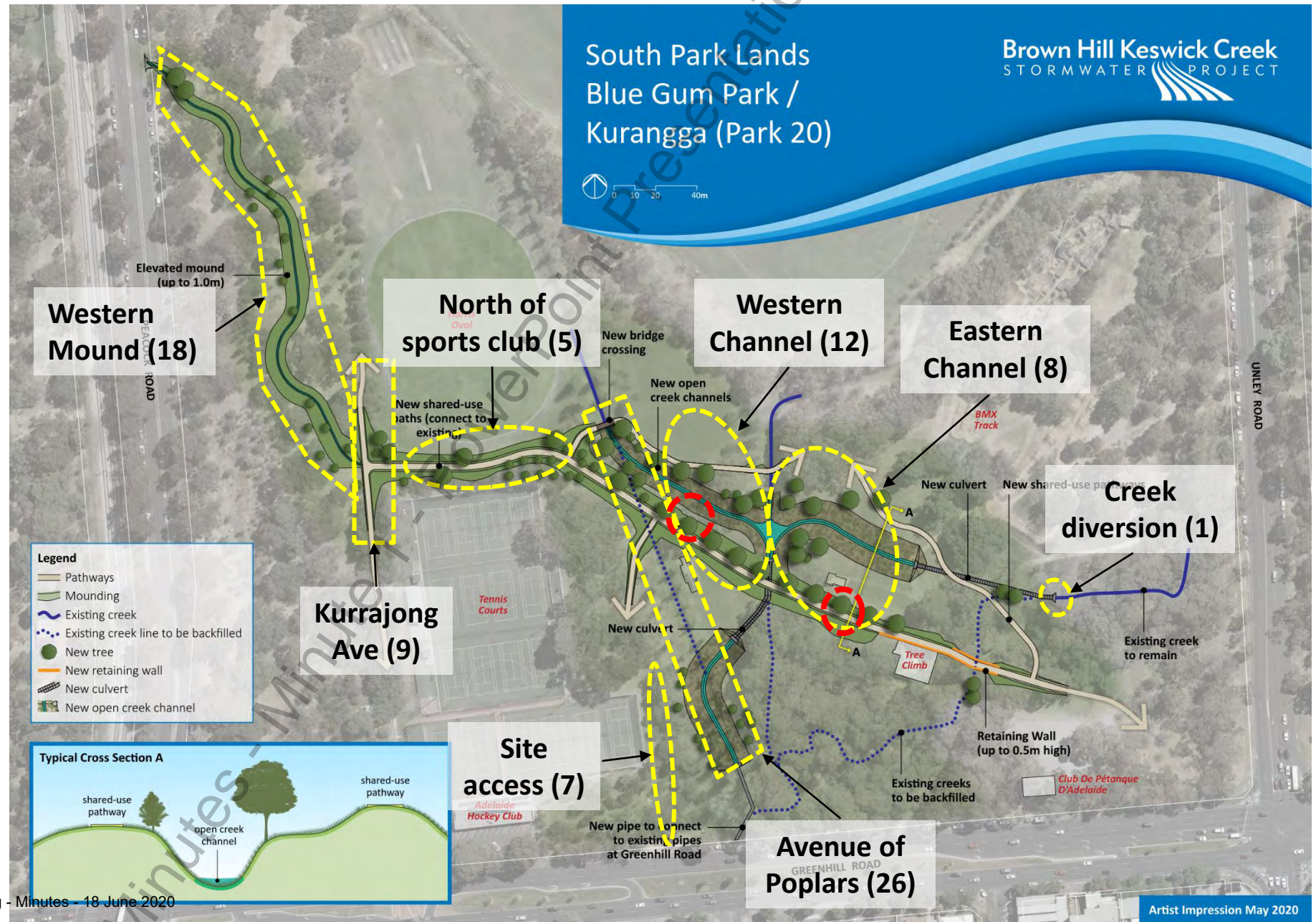
- Existing channel
- Existing shared use path

Designing to minimise tree impacts

- Realigned Park Lands Creek
- Culverts
- Channel alignment
- Mound alignment and scale
- Retaining walls and steeper batters



Tree impacts



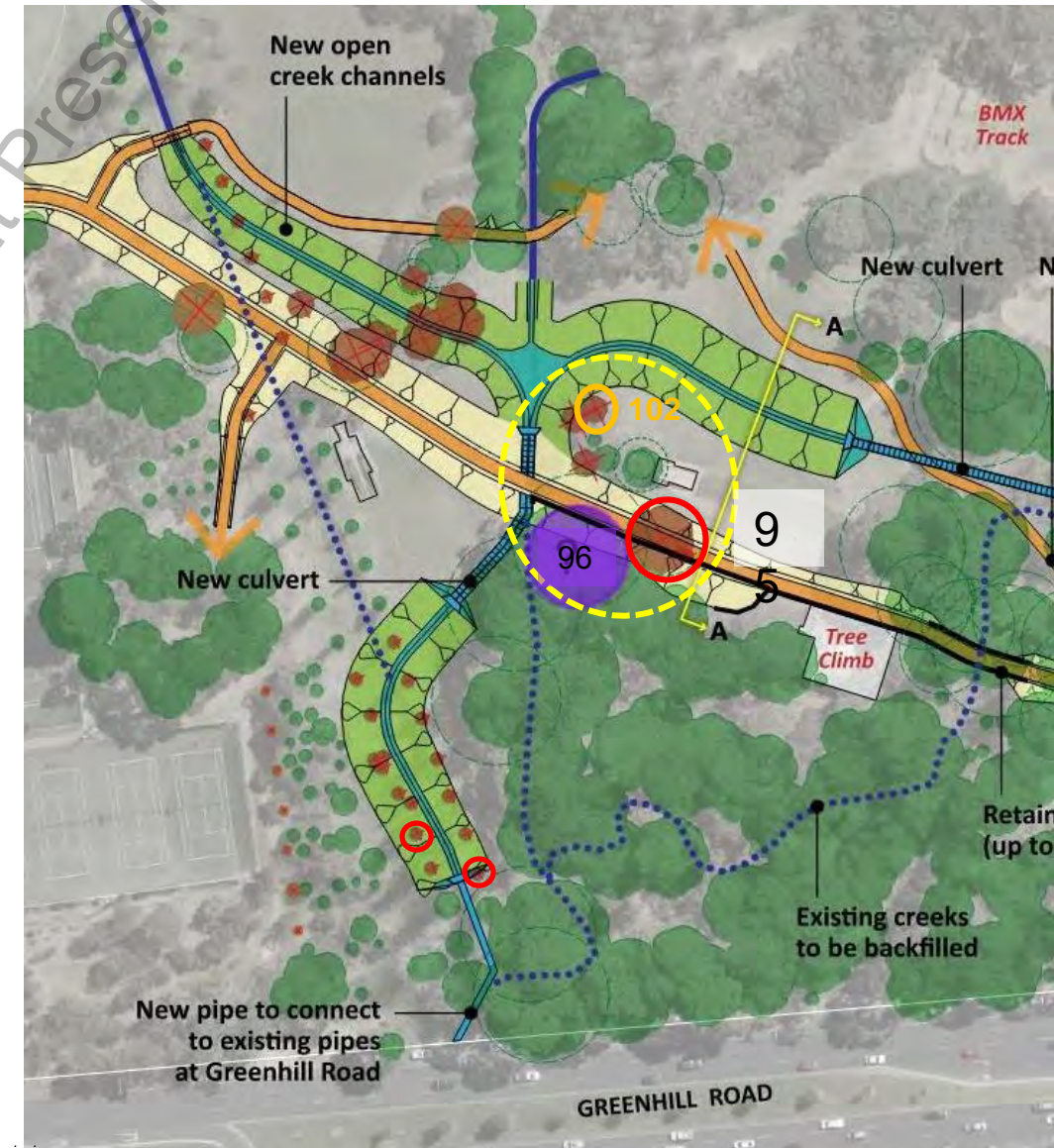
PARK 20 TREES	Location	Retention rating ²⁶	Number
Significant trees (1)	Eastern channel	Important	1
Regulated trees (2)	Western channel	Important	1
	Eastern channel	Important	1
Unregulated trees (39)	Western Mound	Low	5
		Moderate	7
	Kurrajong Avenue	Low	4
		Moderate	4
	North of sports club	Low	4
	Western channel	Important	4
		High	3
		Moderate	3
		Low	1
	Eastern channel	High	2
		Moderate	1
	Park Lands Creek Diversion	Low	1
Unsurveyed trees (19)	Western Mound	Not assessed	6
	Kurranjong Avenue	Not assessed	1
	North of sports club	Not assessed	1
	Site access	Not assessed	7
	Eastern channel	Not assessed	4
sub total			60
Poplars	Avenue of Poplars		26
Total			86

Tree 96 – Significant tree – to be retained during construction but requires works in TPZ .

Note Tree 108 previously incorrectly designated as significant. Reclassified as unregulated.

Tree impacts –Eastern channel

- Alignment of mound constrained by Tree Climb infrastructure north and south
- Retaining walls to minimise tree impacts
- Tree 95 (Regulated) directly impacted due to path alignment
- Tree 102 (High) may be able to be retained during construction



28

Tree 96 – to
be retained



New plants & habitats

100,000+ new plants
160+ trees

Planting zones:

- Riparian areas (grasses, sedges, ground covers & trees)
- 18 wetland aquatic zones (water plants)
- Wetland edge (sedges with groundcovers)
- Terrestrial areas (sedges, grasses & trees)

Summary: South Park Lands benefits

- Regional flood protection
- Park Lands biodiversity
- Improved water quality
- Incorporation of Kaurana cultural heritage
- Recreational amenity
 - walking trails, butterfly habitat, viewing areas, picnic areas
- Interactive space
 - educational opportunities, plantings of indigenous significance